

iQ500, Heat pump tumble dryer, 9 kg, White
WQ46H2D9GB



- ✓ Energy label A+++ our most energy-efficient dryer.
- ✓ autoDry – gentle and precise drying that protects your clothes.
- ✓ selfCleaning condenser: removes fluff to save you time and effort.
- ✓ intelligentDry: automatically adapts the drying cycle to match the washing programme.
- ✓ Home Connect – use Home Connect to access and control your dryer from wherever you are.

Features

Technical Data

Built-in / Free-standing:	Freestanding
Removable top:	No
Door opening:	Right
Length electrical supply cord:	180.0 cm
Dimensions:	842x598x613 mm
Weight:	54.7 kg
Fluorinated greenhouse gases:	No
Hermetically sealed equipment:	Yes
EAN code:	4242003973011
Connection Rating:	800 W
Fuse protection:	10 A
Nominal power:	220-240 V
Frequency:	50 Hz
Capacity:	9.0 kg
Energy efficiency rating:	A+++
Energy consumption electric dryer, full load - NEW (2010/30/EC): 1.44 kWh	
Standard cotton programme time at full load:	265 min
Energy consumption electric dryer, partial load - NEW (2010/30/EC): 0.76 kWh	
Standard cotton programme time at partial load:	160 min
Weighted annual energy consumption, electric dryer - NEW (2010/30/EC):	171.0 kWh/annum
Weighted programme time:	205 min
Average condensation efficiency full load (%):	90 %
Average condensation efficiency partial load (%):	91 %
Weighted condensation efficiency (%):	91 %



4 242003 973011

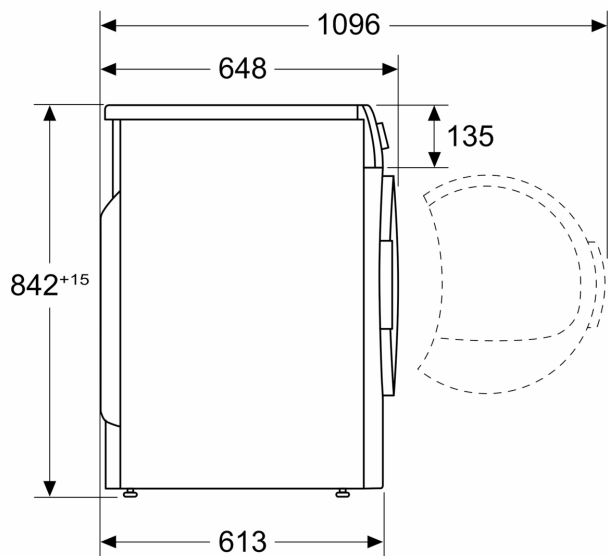
Optional accessories

WZ20600	Wool in basket - accessory
WZ27500	Stacking kit with pull-out shelf
WZ27510	Stacking kit
WZDP20D	Platform with pull-out, dryer, cubic

**iQ500, Heat pump tumble dryer, 9
kg, White
WQ46H2D9GB**

Dimensioned drawings

Measurements in mm



Measurements in mm

